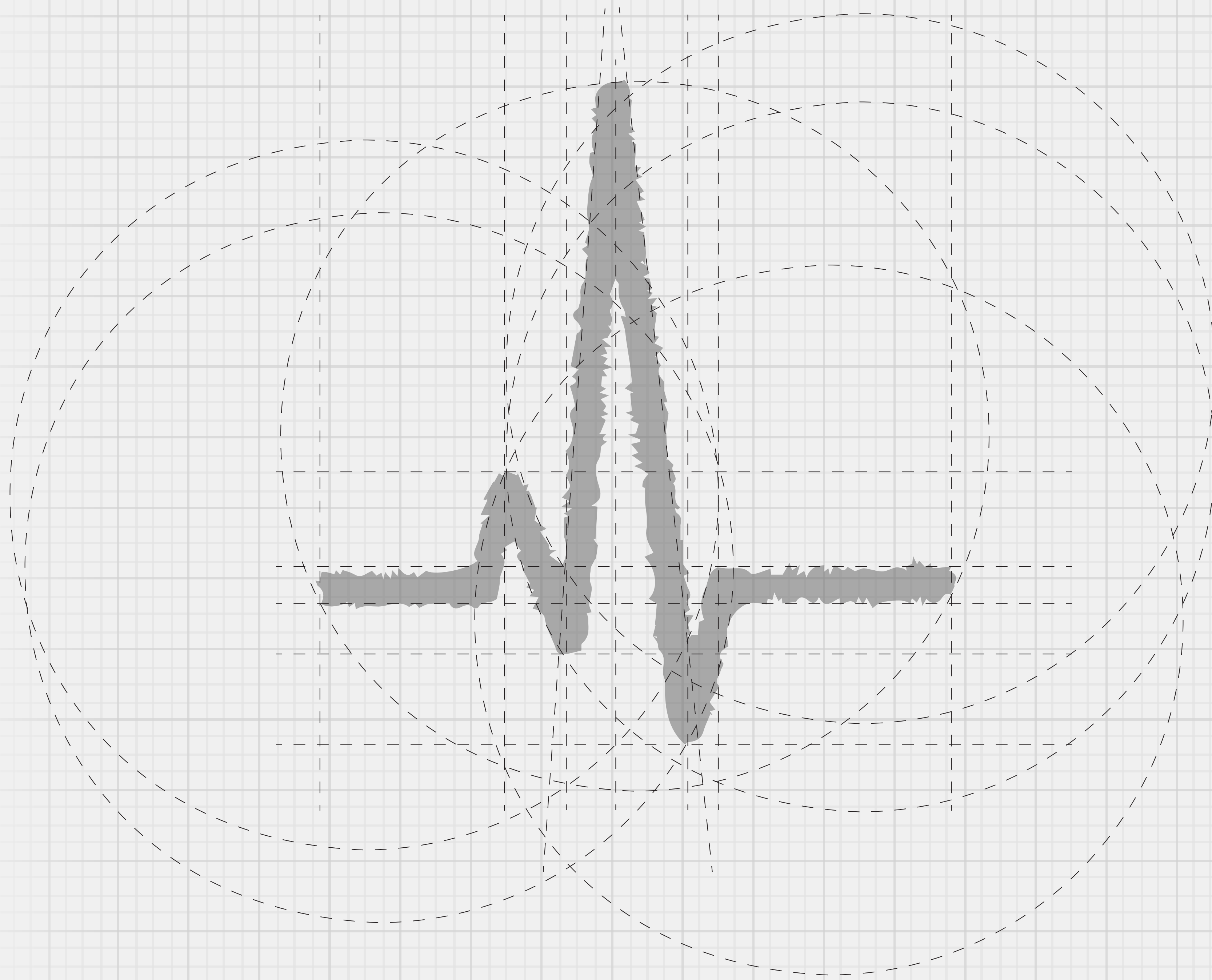
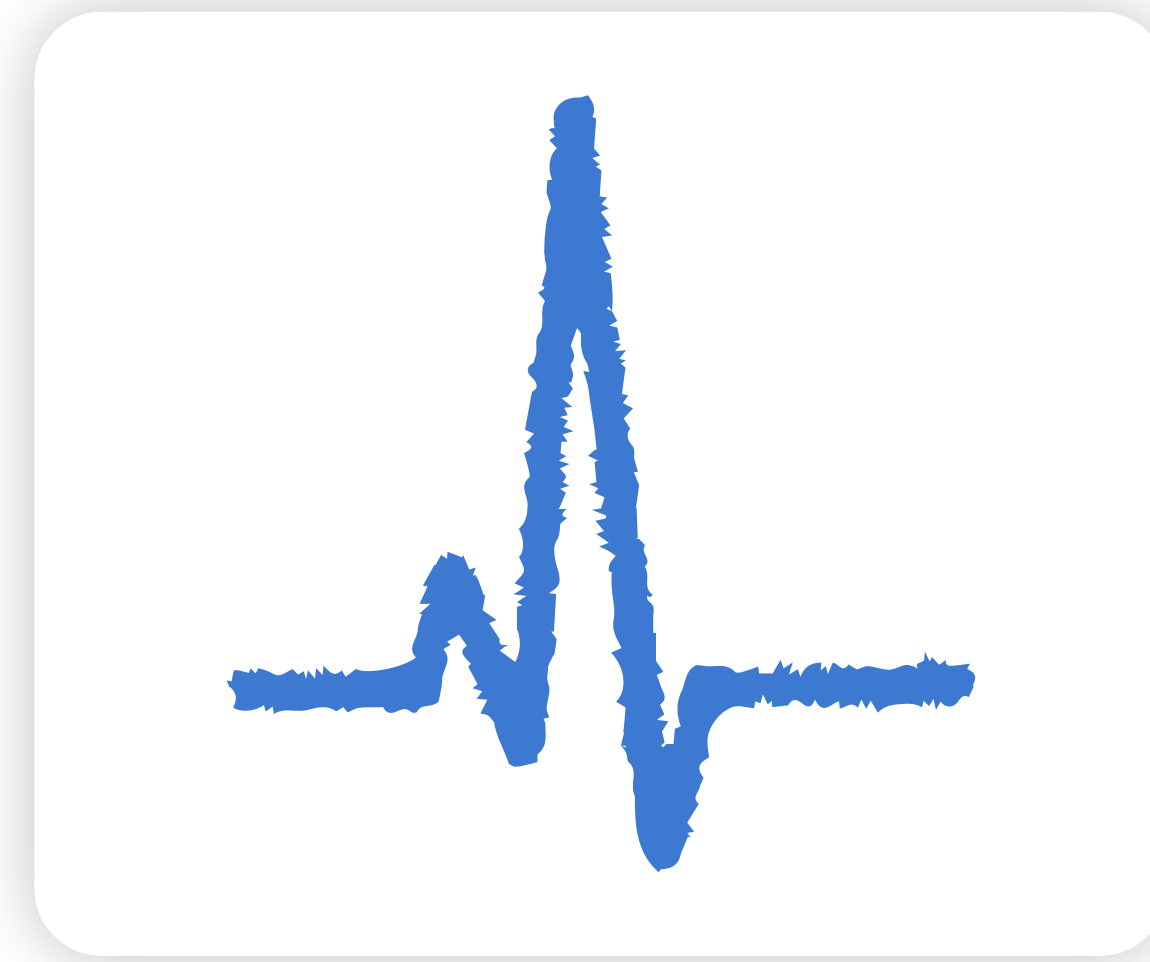




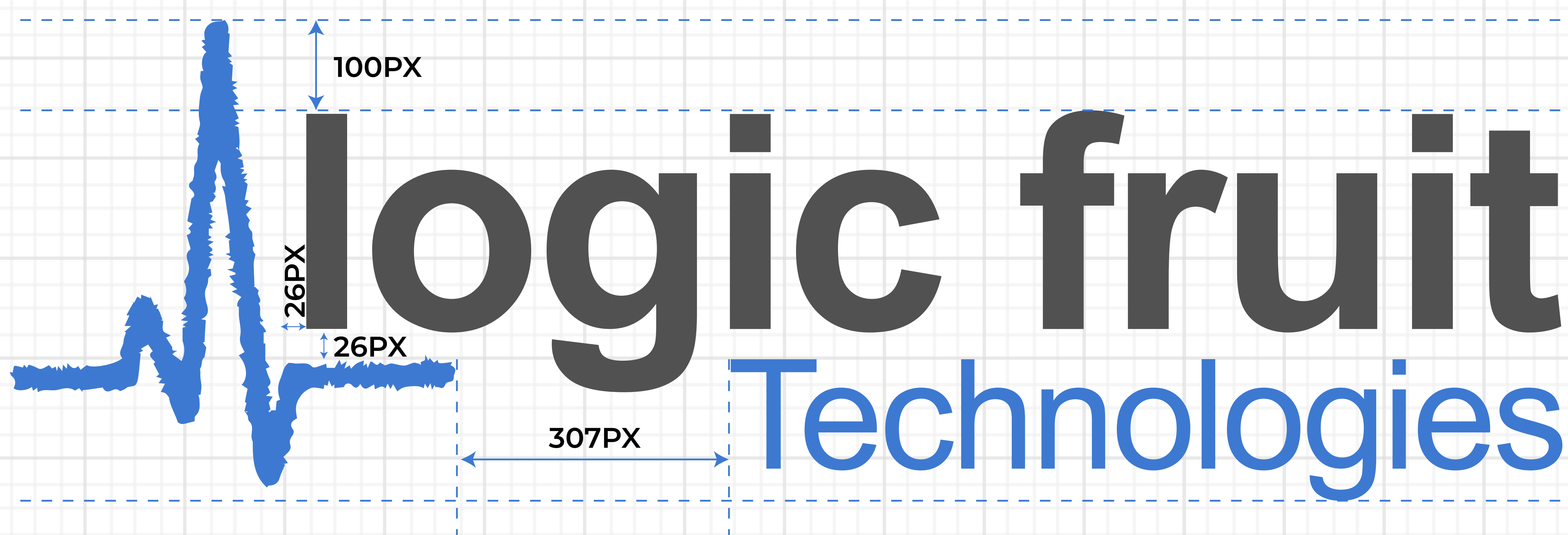
BRAND GUIDELINES

Logo type: Pictorial Mark

This logo contains analog waves which reflects technology. Through a business perspective, it reflects a professional & organized environments.



Logic Fruit Technologies designs and deploys embedded solutions for customers around the world. The company has specific experience in FPGA Design & hardware design, RTL IP Design, variety of digital protocols, communication buses as I²C, 10G Ethernet, PCIe, DIGRF, STM16/64 and HDMI. Logic Fruit team is also developing software- defined radio (SDR) IPs, as well as encryption, signal generation, data analysis, and multiple Image Processing Techniques. Recently Logic Fruit technologies is also exploring FPGA acceleration on data centres for real time data processing.



Primary Color

Blue : It symbolizeds trust, loyalty, confidence, intelligence, trust and truth. It is reliable, responsible, and mentally soothing.

Blue is a perennial choice in corporate branding not only is it the color most people cite as their favorite, it's also associated with power and success.

As the tech sector matured, the blue tones lightened and brightened.

Dark Grey : The dark gray color is solid and stable, creating a sense of calm and composure, relief from a chaotic world.

Gray serves as a good background for other colors as it doesn't attract attention, allowing the other colors to take prominence.

Gray suggests security, reliability, modesty, maturity and dullness. It can imply that you can't make decisions, 'the fence-sitter', that you don't have an opinion on anything.

Secondary Color

Orange: Secondary color is created using the primary color. Logic Fruit Technologies secondary colour is Orange. The opposite of orange is the color blue. They are exact opposites on the color wheel.

It can be used in all CTA (Call-to-action) links and buttons to create a contrast or variation.

Orange is an appealing color which facilitates the extrovert and risk-taker in all of us. Vitalizing the senses, this color encourages adventure and discovery.



#3d79d1

RGB: 61 121 209
CMYK: 71 42 0 18

#515151

RGB: 81 81 81
CMYK: 0 0 0 68

#3D78D1#2A5391#182F52#407FDE#3569B8

#515151#636363#E3E3E3#F0F0F0#C9C9C9

#FF8C00

RGB: 255 140 0
CMYK: 0 45 100 0

#FF8C00#6B3B00#EB8100#F78800#D17300

Primary Font

Arial: Logic Fruit Technologies primary font is ARIAL. This font feels simple and strong. it has a clean look and feels easy to read.

The Arial font family are packaged with all versions of Microsoft Windows. We mainly use light, medium and bold.

The logo font is Arial Bold and Regular Both.

Secondary Font

Montserrat: Logic Fruit Technologies secondary font is Montserrat. This font is available free of charge, and supports most of the languages.

Montserrat can we be used all designs other than the logo.

Montserrat is very versatile and can be used in multiple domains such as websites, the publishing world, branding, editorial, logos, print, posters, etc.

It is a typeface that can be used basically anywherebecause of the geometric and elegant simplicity with nice large x-height.

Montserrat Font Family

- * ExtraLight
- * Thin
- * Light
- * Regular
- * Italic
- * Medium
- * Semibold
- * Bold
- * Extrabold
- * Black

ARIAL

Regular
ABCDEFGHIJKLMNOPQRSTUVWXYZ
abcdefghijklmnopqrstuvwxyz

Bold
ABCDEFGHIJKLMNOPQRSTUVWXYZ
abcdefghijklmnopqrstuvwxyz

Black
ABCDEFGHIJKLMNOPQRSTUVWXYZ
abcdefghijklmnopqrstuvwxyz

Montserrat

Extralight
ABCDEFGHIJKLMNOPQRSTUVWXYZ
abcdefghijklmnopqrstuvwxyz

Thin
ABCDEFGHIJKLMNOPQRSTUVWXYZ
abcdefghijklmnopqrstuvwxyz

Light
ABCDEFGHIJKLMNOPQRSTUVWXYZ
abcdefghijklmnopqrstuvwxyz

Regular
ABCDEFGHIJKLMNOPQRSTUVWXYZ
abcdefghijklmnopqrstuvwxyz

Italic
ABCDEFGHIJKLMNOPQRSTUVWXYZ
abcdefghijklmnopqrstuvwxyz

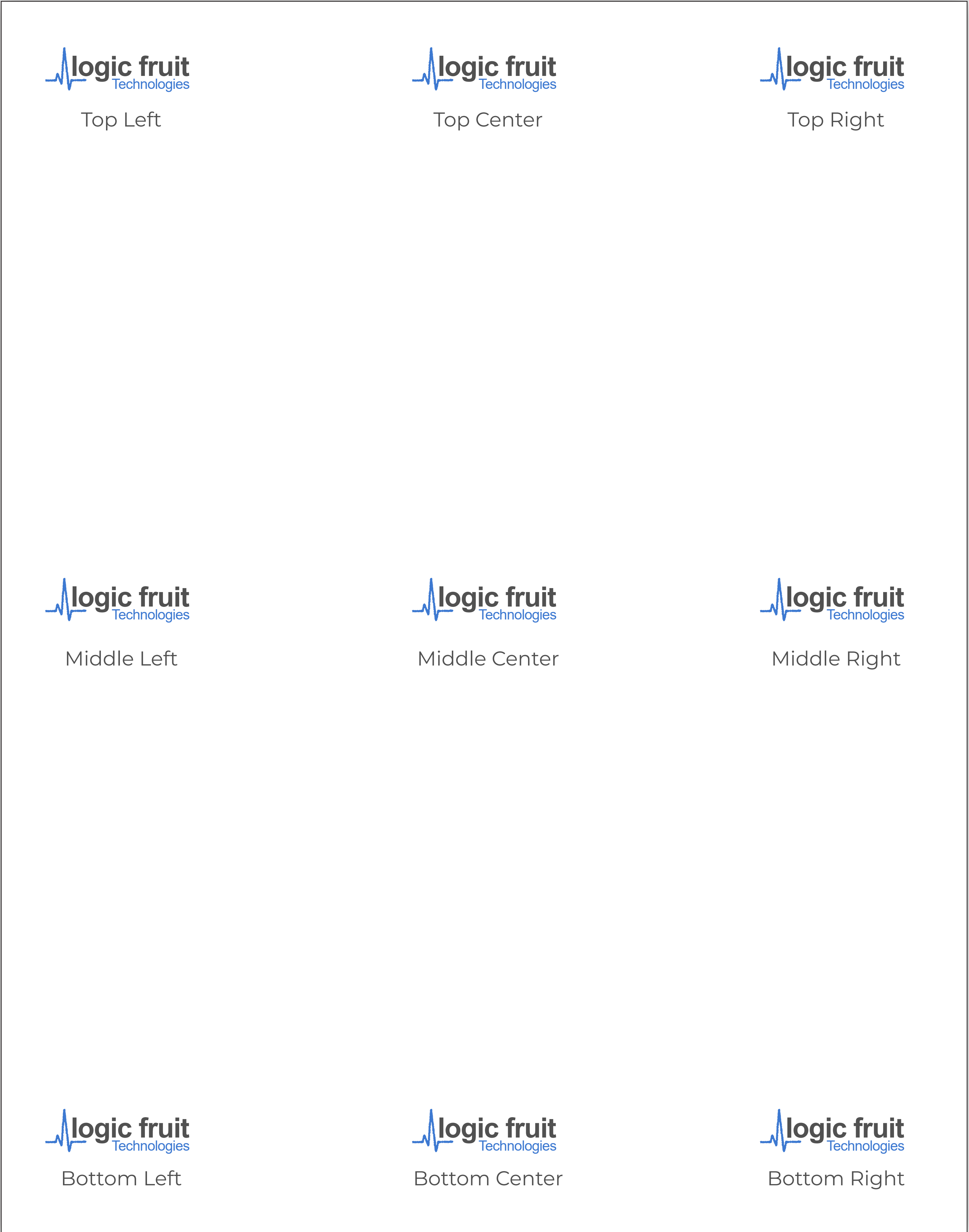
Medium
ABCDEFGHIJKLMNOPQRSTUVWXYZ
abcdefghijklmnopqrstuvwxyz

Bold
ABCDEFGHIJKLMNOPQRSTUVWXYZ
abcdefghijklmnopqrstuvwxyz

Black
ABCDEFGHIJKLMNOPQRSTUVWXYZ
abcdefghijklmnopqrstuvwxyz

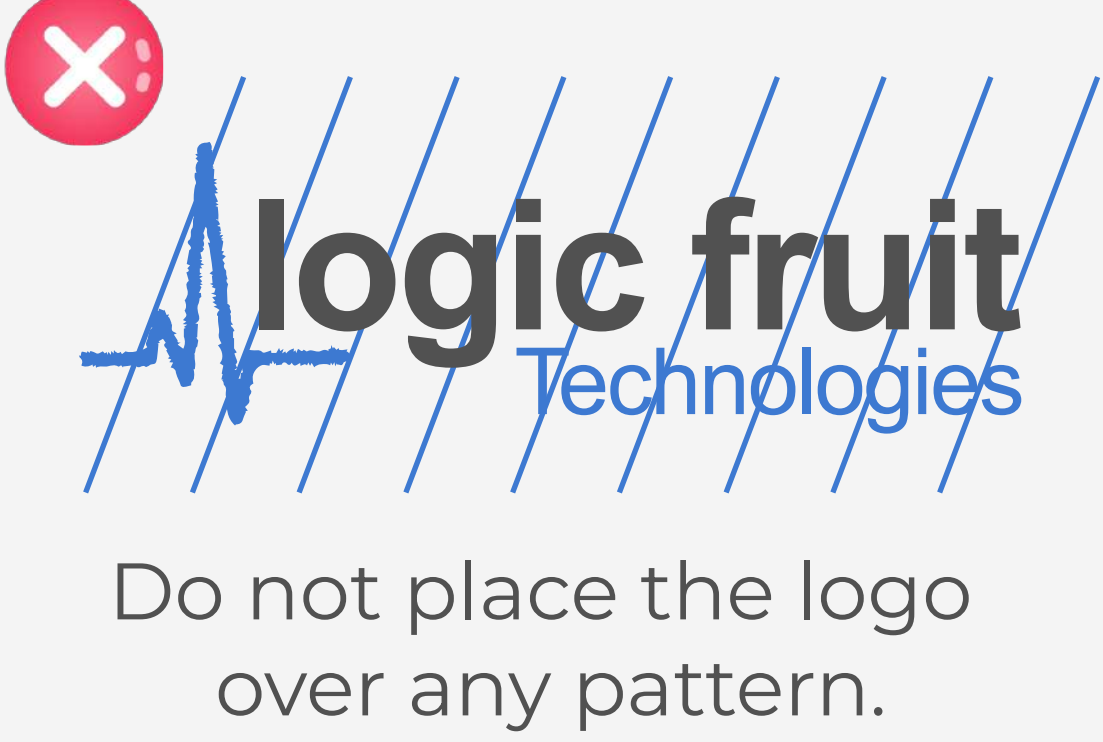
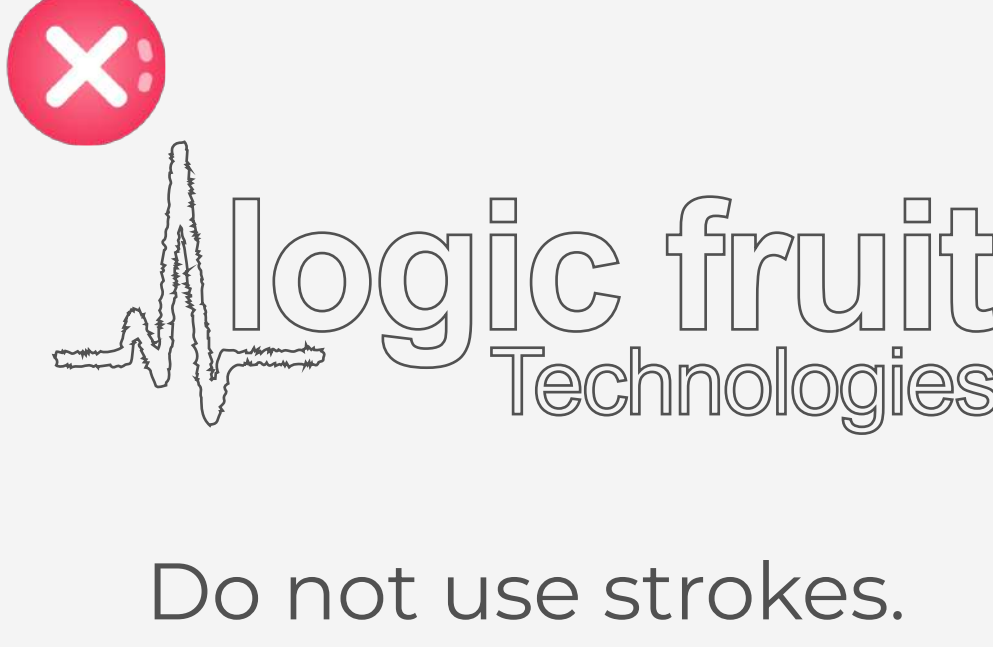
Placement

To ensure consistency, make sure use the logo in certain area of every canvas or page.



Logo Don'ts

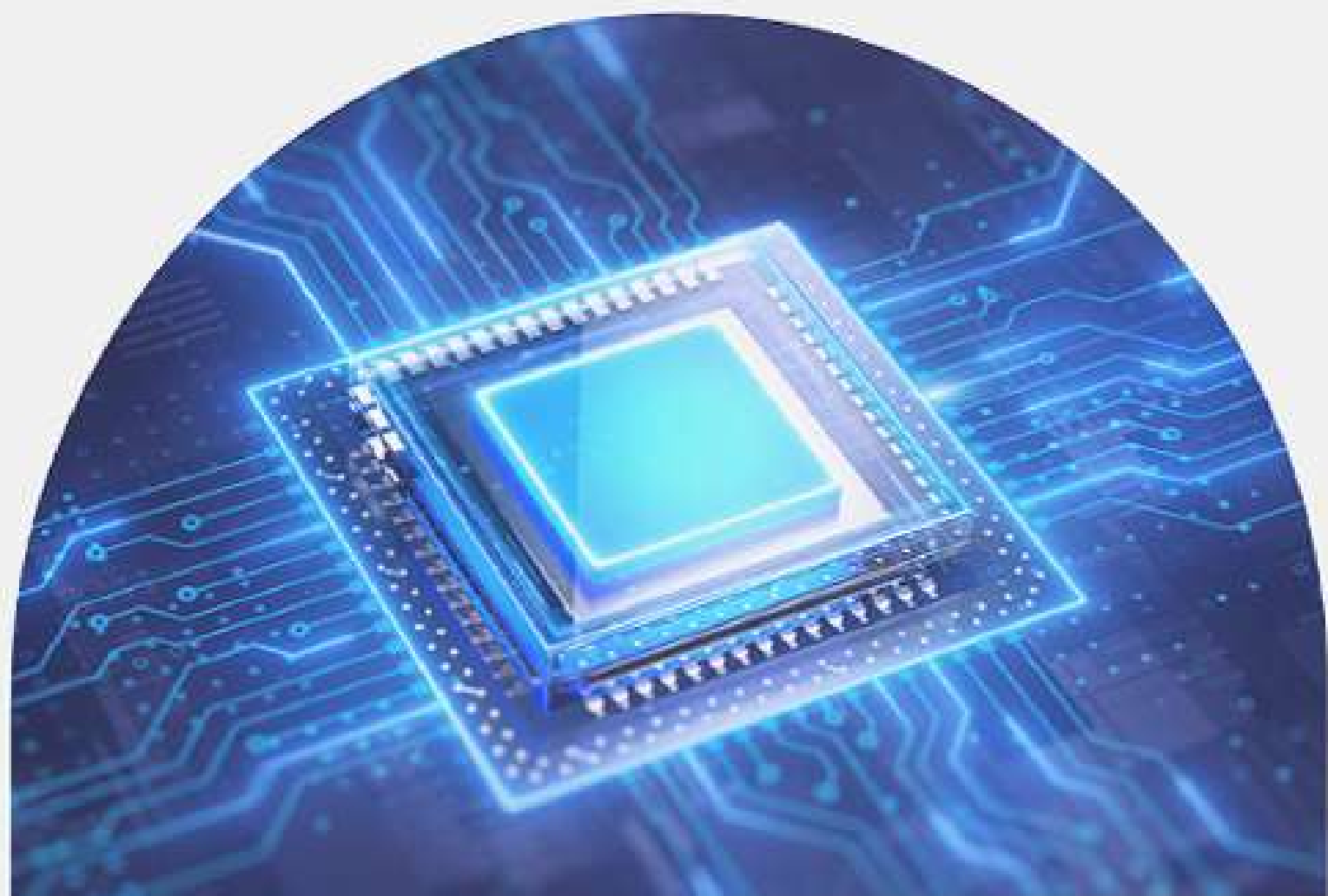
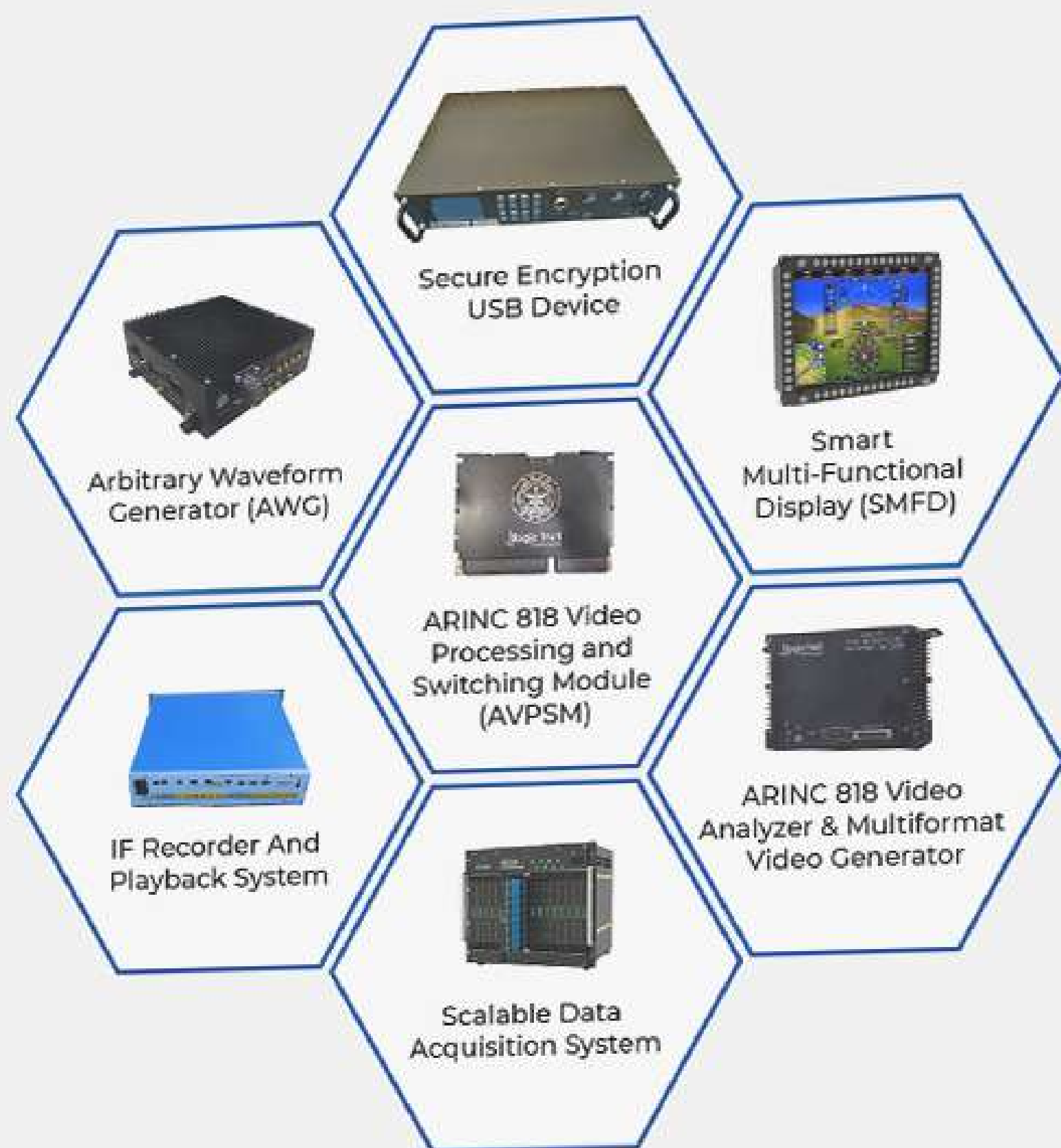
The Logic Fruit Technologies logo should not be altered. These Logo Standards apply to all contents



PROJECTS WE DELIVERED

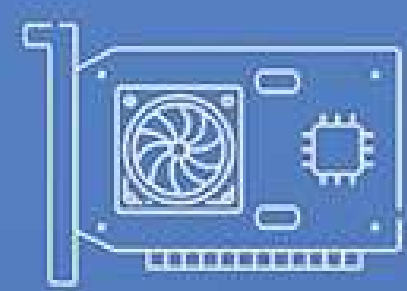
We have designed & developed a wide array of advanced systems to our customers globally.

Our deep expertise in different domains as well as embedded technology allows us to fully understand and anticipate customer requirements and complete projects quickly.



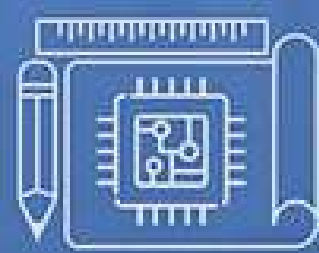
FIND BETTER SOLUTIONS FOR BETTER ORGANIZATIONS.

For High-Performance Real World Applications.



FPGA Design

FPGA prototyping | IP core development | High-speed protocols



Hardware Design

High speed/complex board design | Mechanical design | Certified Quality



Embedded Software Development

BSP | Device Drivers | Multiple OS support



Turnkey Product Development

Data Acquisition | Image & Video Processing | Security & Surveillance | Satellite Communication.

EMBEDDING TECHNOLOGY.
EXPANDING THE FUTURE.



FPGA DEVELOPMENT FOR THE EMBEDDED WORLD.

Logic Fruit Technologies is a product engineering & design services provider and deploys embedded solutions for customers around the world. The company has specific experience in FPGA design & hardware design, RTL IP design, the variety of high speed digital protocols, communication buses such as PCIe, Ethernet(10G/100G), DIGRF, SATA, STM16/64, and HDMI.

CLIENTS & PARTNER

We partner with industry leaders to understand the full implications of each technical challenge, creating a plan with our expertise and reduce the timeline to market new innovations.

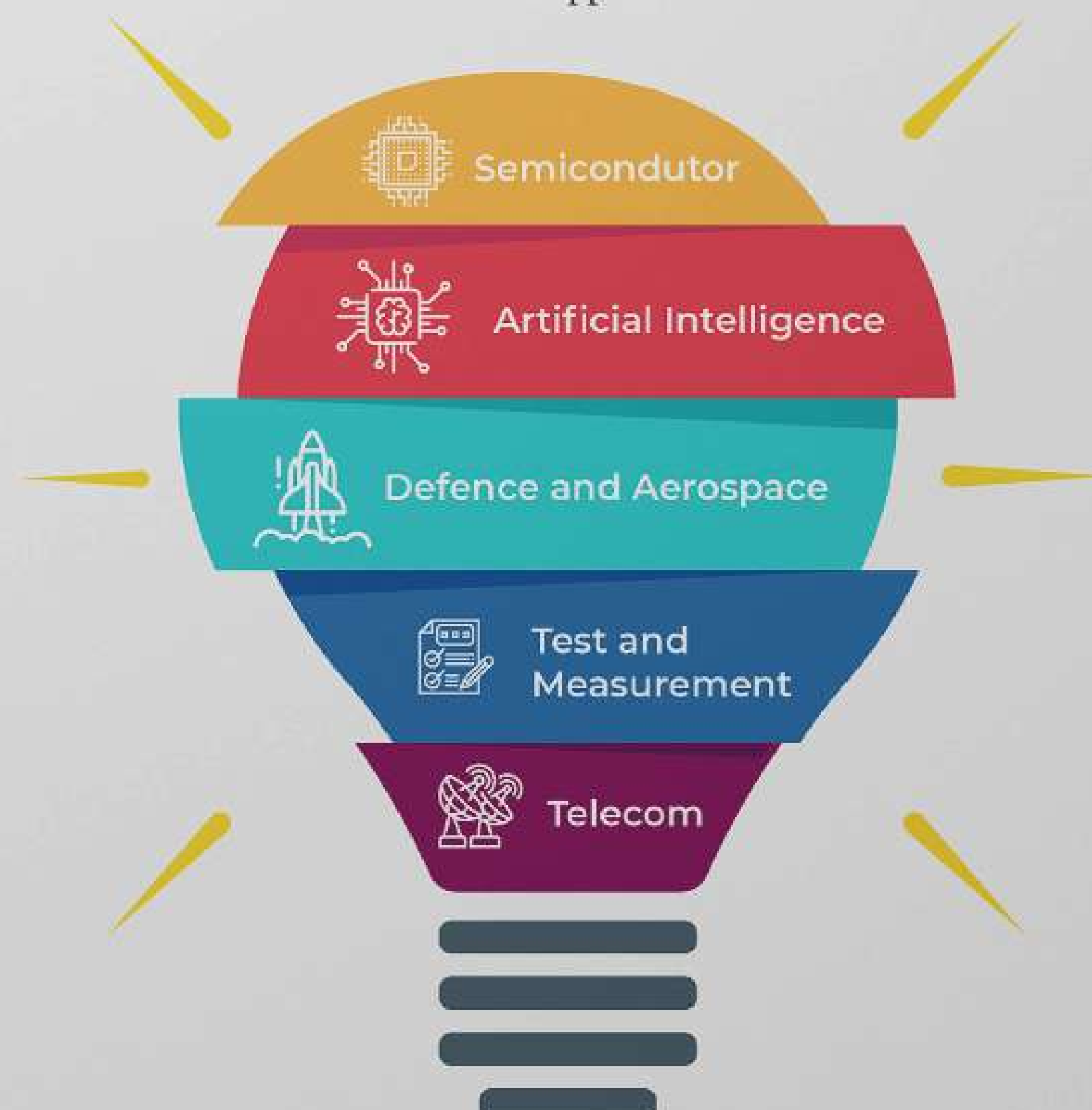


CERTIFICATION



DOMAINS WE SERVE

Our expertise and experience spans multiple industries and technologies and we create customized solutions that are optimized for high-performance and suitable for the real world applications.



www.logic-fruit.com

GURGAON (R&D CENTER)

806, 8th Floor BPTP Park Centra
Sector-30, NH-8 Gurgaon - 122001
Haryana (India)
+91-0124 4643950
info@logic-fruit.com

BANGALORE (R&D CENTER)

Sy. No 118, 3rd Floor, Gayathri
Lakefront, Outer Ring Road, Hebbal,
Bangalore - 560 024
+91 80-69019700/01
sales@logic-fruit.com

USA (SALES OFFICE)

Logic Fruit Inc. 862 E Evelyn Ave,
Sunnyvale, CA 94086, USA
+1-408 718 9782
us@logic-fruit.com

STAY CONNECTED WITH US

[f /logicfruit](https://www.facebook.com/logicfruit) [in /company/logicfruit](https://www.linkedin.com/company/logicfruit) [t /logicfruit](https://twitter.com/logicfruit)



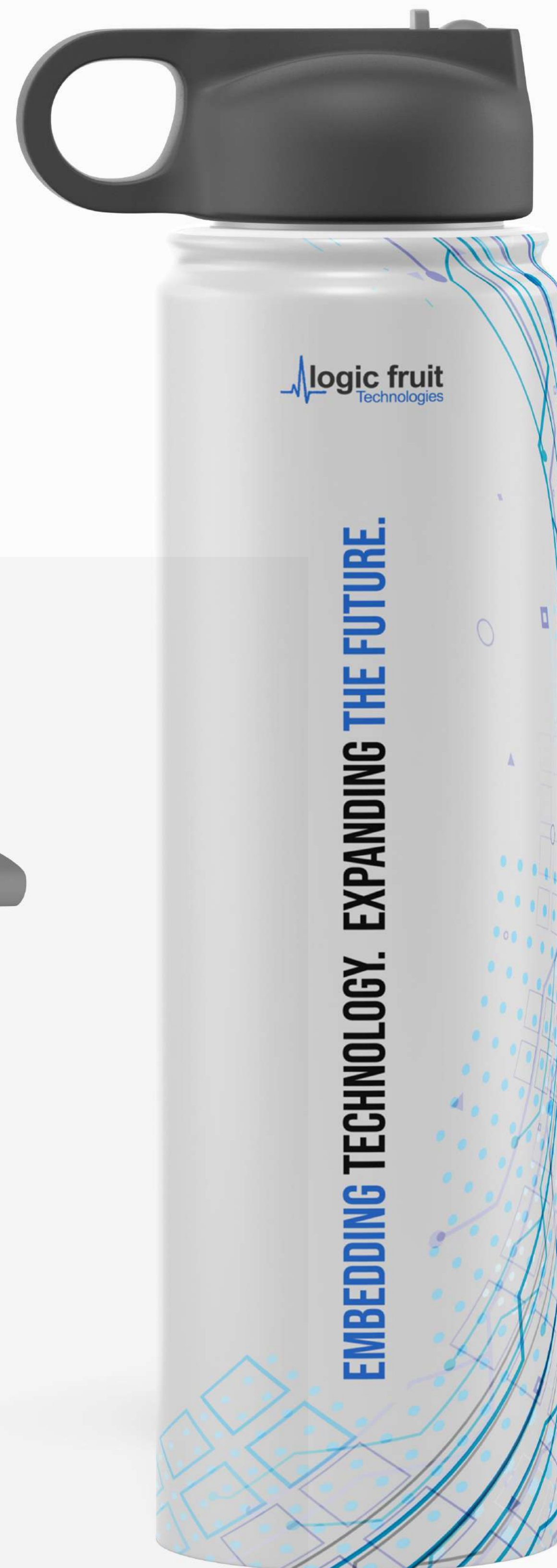
logic fruit
Technologies

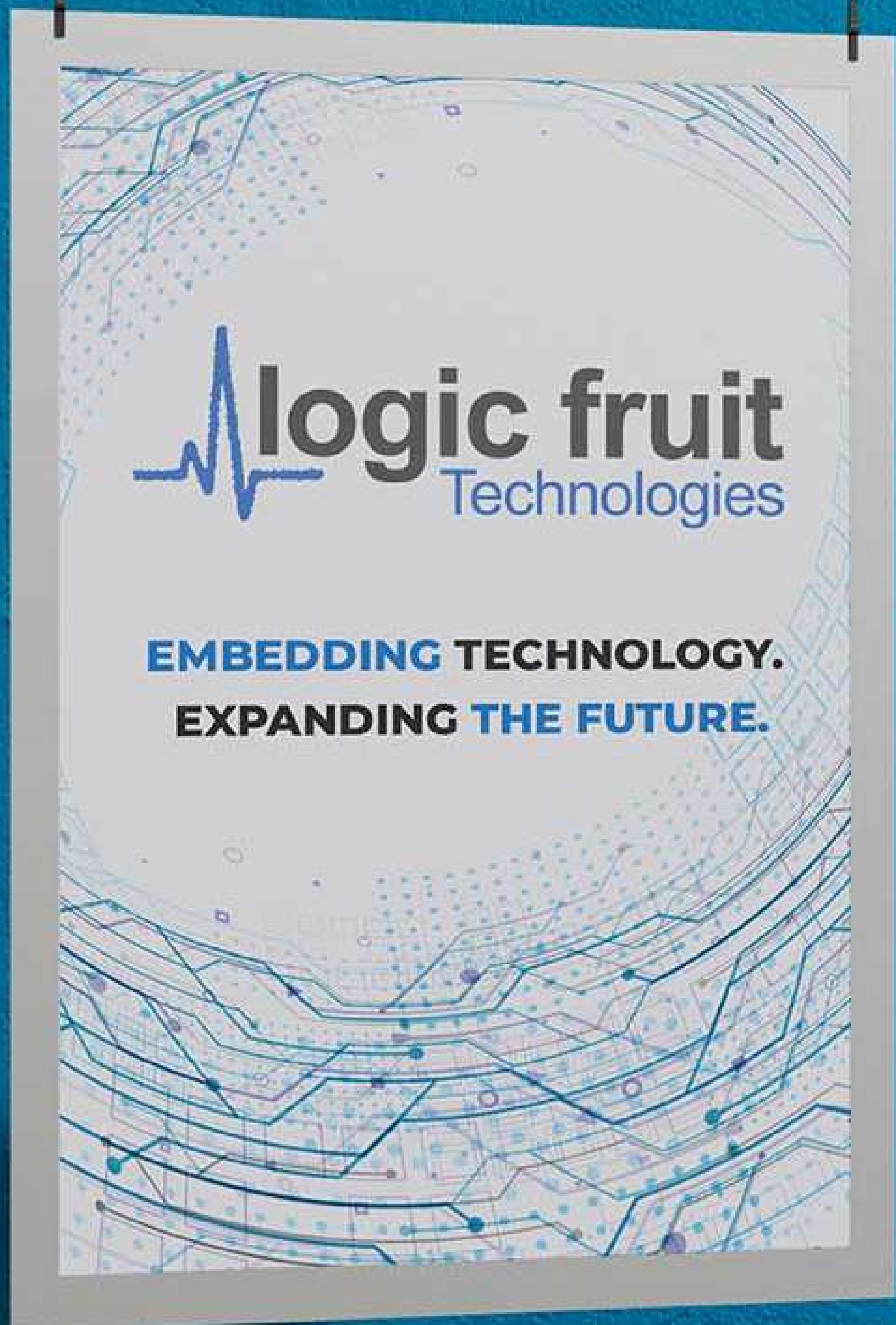
The image shows the entrance of a modern building with a dark, textured facade. The company name 'logic fruit Technologies' is mounted on the wall above a large glass entrance. The logo features a stylized heartbeat line to the left of the text. The building has large glass windows reflecting the sky and surrounding environment. A small tree is visible on the left side of the frame.



logic fruit
Technologies

The image shows a close-up of the company logo mounted on a dark, textured wall. The logo consists of a stylized heartbeat line to the left of the text 'logic fruit Technologies'. The text is in a clean, sans-serif font. The wall is made of large, dark rectangular panels.





*We are the one step solution provider
for all your embedded design &
development requirements.*

